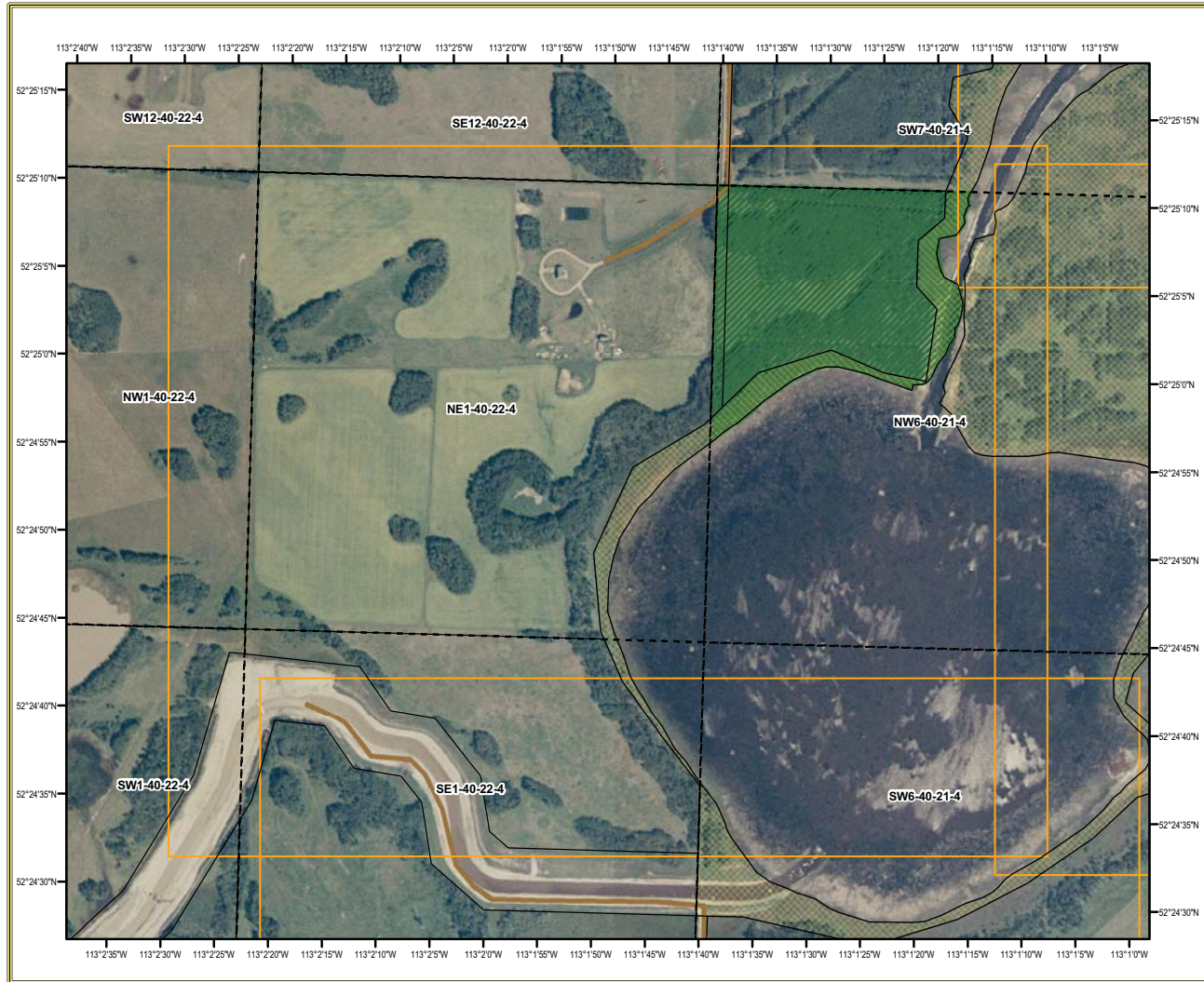
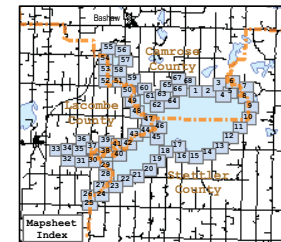


# Mapsheet 26



## Mapsheet Index Legend

- |                             |  |  |                     |
|-----------------------------|--|--|---------------------|
| Mapsheet index tiles        | Identified emergent vegetation (Fish & Wildlife Protective Notation, 2002) | Buffalo Lk. Meets Settlement Historic Site | Known Public Access |
| Provincial Recreation Areas | Public Land  | Water Management R / W (Right of Way)      |                     |
| Provincial Parks            | MDS/Countries  | Quarter Section                            |                     |
| Summer Villages             | Paved  | Surveyed Lots & Right of Ways              |                     |
| Gravel 2 Lane               | Gravel 1 Lane  |  |                     |
| Unimproved Road             | Truck Trail  |  |                     |
| Hydrography                 |  |  |                     |
- NOTE: ABRV holds a R/W for the bed and shore around the entire lake.



Red Deer RRU  
Alberta Sustainable Resource Development  
Prairie Area

© 2007 Government of Alberta  
Base Data Provided by the Spatial Data Warehouse Ltd.

The Minister and the Crown provides this information without warranty or representation as to any matter including but not limited to whether the data / information is correct, accurate or free from error, defect, danger, or hazard and whether it is otherwise useful or suitable for any use the user may make of it.

Date: October 16, 2007  
Projection: NAD\_1983\_LTM\_Zone\_12N  
U:\Projects\pub\buff\_rk\_l\project\_files\index\_mxd  
September\rev\_buf\_rk\_overview\_index\_2007.mxd

