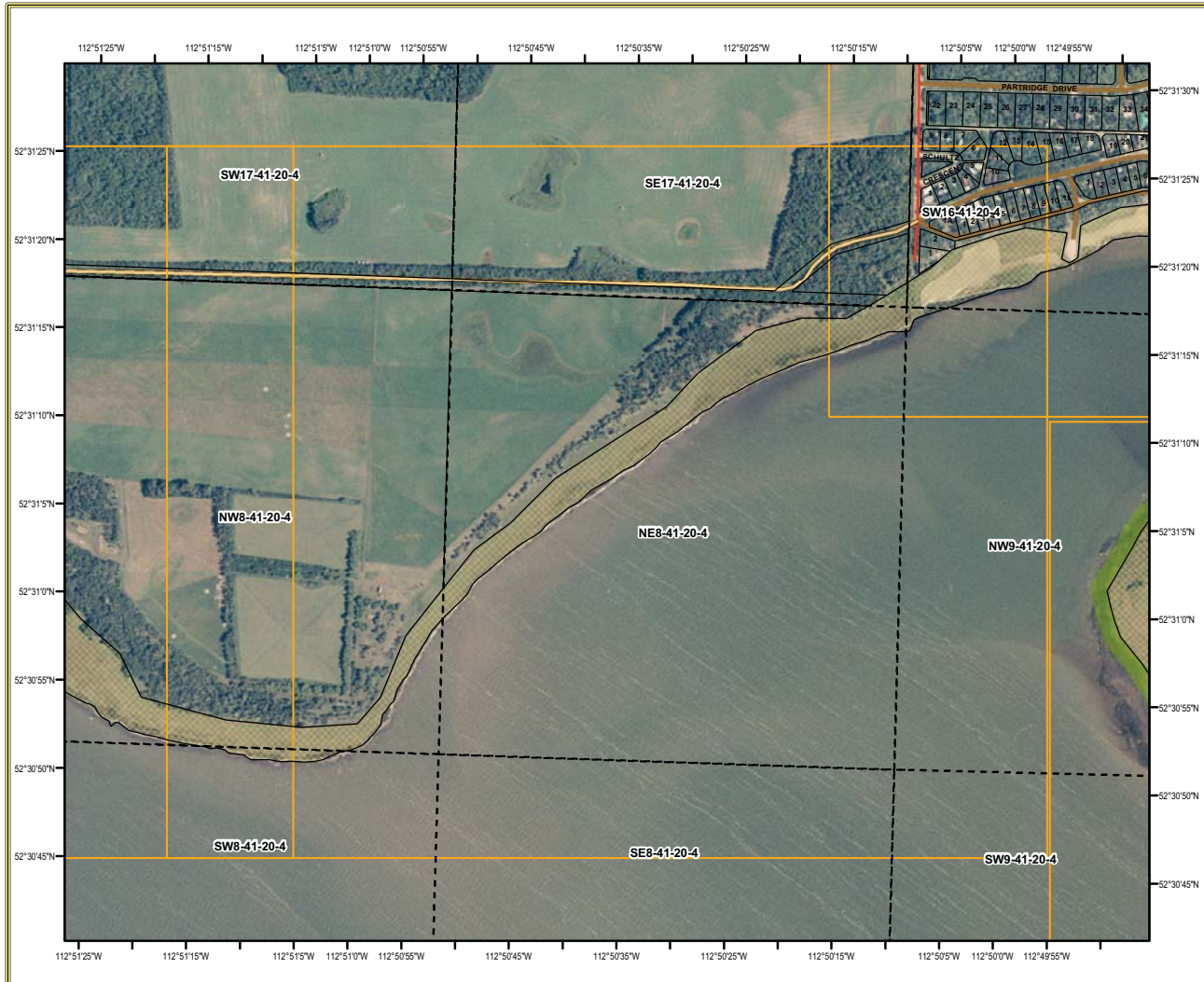
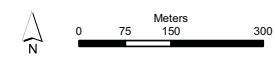
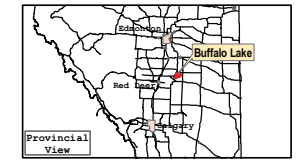
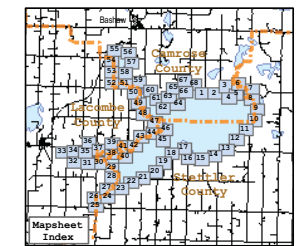


Mapsheet 2



Mapsheet Index Legend

- Mapsheet index tiles
 - Identified emergent vegetation (Fish & Wildlife Protective Notation, 2002)
 - Buffalo Lk. Metis Settlement Historic Site
 - Provincial Recreation Areas
 - Provincial Parks
 - MDS/Countries
 - Summer Villages
 - Paved
 - Gravel 2 Lane
 - Gravel 1 Lane
 - Unimproved Road
 - Truck Trail
 - Hydrography
 - Known Public Access
 - Public Land
 - Water Management R / W (Right of Way)
 - Quarter Section
 - Surveyed Lots & Right of Ways
- NOTE: ARDV holds a PRF for the bed and shore around the entire lake.



Red Deer RRU
 Alberta Sustainable Resource Development
 Prairie Area

© 2007 Government of Alberta
 Base Data Provided by the Spatial Data Warehouse Ltd.

The Minister and the Crown provides this information without warranty or representation as to any matter including but not limited to whether the data / information is correct, accurate or free from error, defect, danger, or hazard and whether it is otherwise useful or suitable for any use the user may make of it.

Date: October 16, 2007
 Projection: NAD_1983_UTM_Zone_12N
 U:\Projects\pub\hdbuf_ik_up\project_files\index.mxd
 \september\rev_bud_ik_overview_index_2007.mxd

